

# Titanium Base



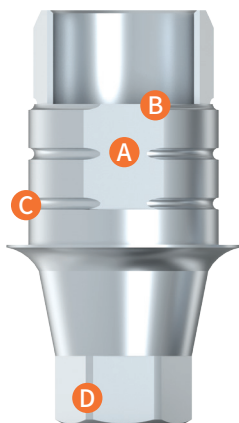
## Raw Material

Ti 6Al-4V ELI (ASTM F 136)

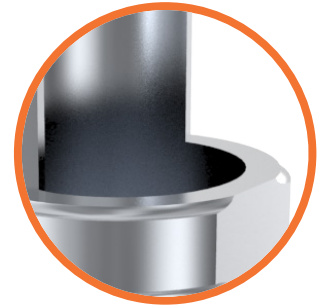
Supplied by Germany

- Titanium Interface Abutment
- Combination of high fatigue strength
- Superior level of bioCompatible

## Simple & Easy



**A.** The cut side surface and Hex part surface in the image are same direction

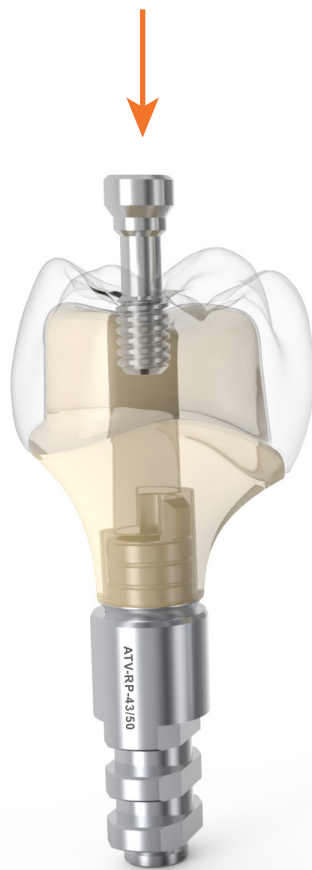


**B.** Prevention of Zirconia Rotation.

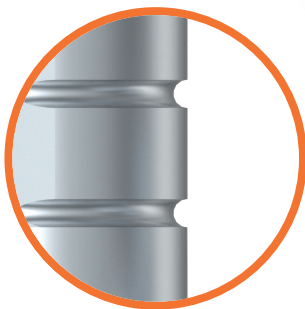
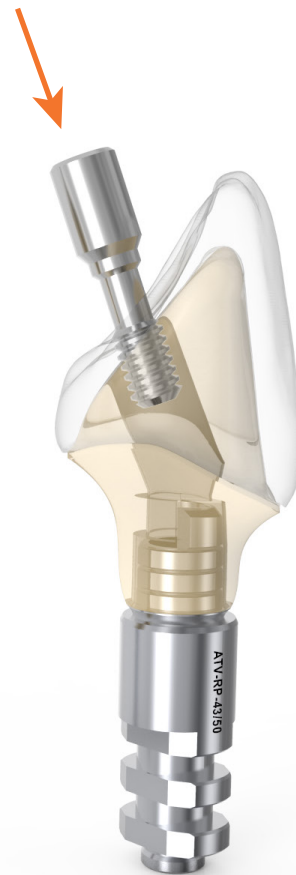
# Simply Smarter

2 Screws Included

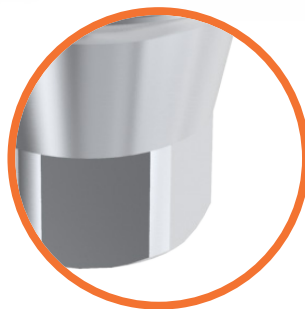
[ Straight screw-channel ]



[ Angled screw-channel ]



C. Exterior retentions for more cementation bonding



D. Precision machined up to  $\pm 5\mu$

## Warranty

All ARUM prosthetic components include a 20 year warranty from delivery. The prosthetic components will be replaced if removal of that product is due to failure.